

FOR SALES PURPOSES ONLY  
**HIGH MEADOW ESTATES  
 SECTION SEVEN**

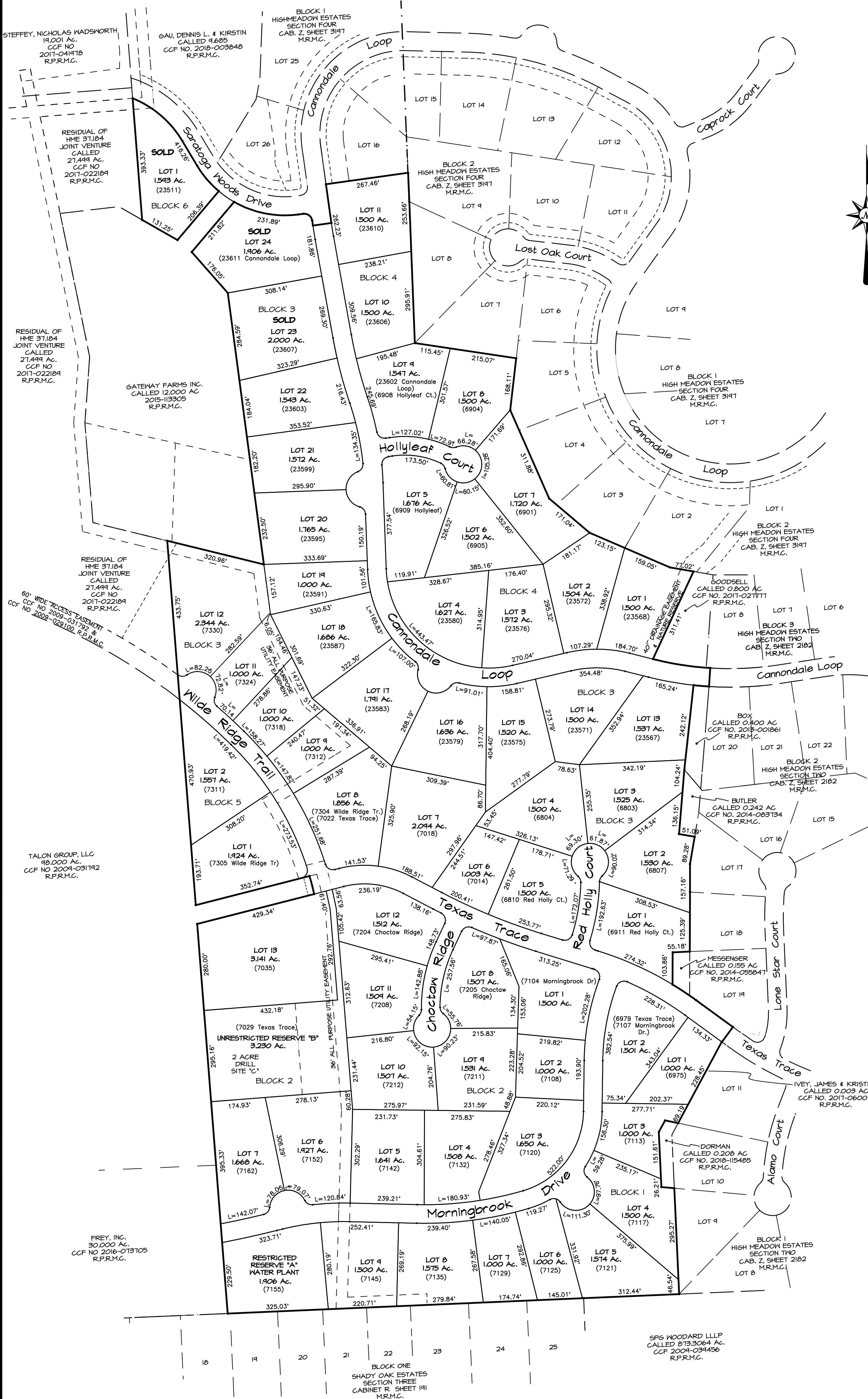
60 RESIDENTIAL LOTS \* 6 BLOCKS  
 1 RESTRICTED RESERVE \* 1 UNRESTRICTED RESERVE



LAND SURVEYING & MAPPING  
 103 TRACE COURT MONTGOMERY, TEXAS 77316  
 PH: (936) 522-8716

THERE IS A 30' WIDE DRAINAGE EASEMENT CENTERED ALONG  
 ALL NATURAL DRAINAGE COURSES.

SCALE: 1" = 200' DATE: MAY, 2019



STEFFEY, NICHOLAS MADSNORTH  
 19.001 Ac.  
 CCF NO 2017-041978  
 R.P.R.M.C.

GAU, DENNIS L. & KIRSTIN  
 CALLED 4.685  
 CCF NO. 2018-003848  
 R.P.R.M.C.

BLOCK 1  
 HIGH MEADOW ESTATES  
 SECTION FOUR  
 CAB. Z. SHEET 3197  
 M.R.M.C.

RESIDUAL OF  
 HME 37.184  
 JOINT VENTURE  
 CALLED  
 27.499 Ac.  
 CCF NO  
 2017-022184  
 R.P.R.M.C.

RESIDUAL OF  
 HME 37.184  
 JOINT VENTURE  
 CALLED  
 27.499 Ac.  
 CCF NO  
 2017-022184  
 R.P.R.M.C.

GATEWAY FARMS INC.  
 CALLED 12.000 AC  
 2015-113305  
 R.P.R.M.C.

RESIDUAL OF  
 HME 37.184  
 JOINT VENTURE  
 CALLED  
 27.499 Ac.  
 CCF NO  
 2017-022184  
 R.P.R.M.C.

60' WIDE ACCESS EASEMENT  
 CCF NO 2009-031792 &  
 2009-028102 R.P.R.M.C.

TALON GROUP, LLC  
 48.000 Ac.  
 CCF NO 2004-031142  
 R.P.R.M.C.

FREY, INC.  
 30.000 Ac.  
 CCF NO 2016-013705  
 R.P.R.M.C.

SPG WOODARD LLLP  
 CALLED 8733064 Ac.  
 CCF 2004-034456  
 R.P.R.M.C.

IVEY, JAMES & KRISTIAN  
 CALLED 0.003 AC  
 CCF NO. 2011-060018  
 R.P.R.M.C.

MESSENGER  
 CALLED 0.155 AC  
 CCF NO. 2014-055847  
 R.P.R.M.C.

BUTLER  
 CALLED 0.242 AC  
 CCF NO. 2014-083734  
 R.P.R.M.C.

BOY  
 CALLED 0.400 AC  
 CCF NO. 2018-001861  
 R.P.R.M.C.

GOODSELL  
 CALLED 0.800 AC  
 CCF NO. 2017-021777  
 R.P.R.M.C.